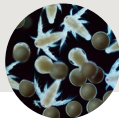


Dried Artemia Cysts

P r e m i u m Q u a l i t y C y s t s



- Hatching rates from 70% to 90%+
- Nauplii per gram 220.000 +
- Cyst size : 200 - 250 microns
- High rated HUFA
- EPA ratio up to 8%

Artemia Parthenogenetica

Artemia is the most interesting inhabitant highly- salt lakes. One can only wonder how these delicate weightless creatures manage to resist the caustic brine in which they live. Artemia crustacean puts out nearly all the energy derived from eating microorganisms for maintaining a normal water-salt balance in its body. There are no other such salt-tolerant crustaceans in the world.

Packing

- Vacuum polyethylene bags (net weight 0.5 kg/1 kg / 2 kg) in a plastic bucket
- Plastic bucket with a polyethylene liner (net weight 9 kg)
- Metal cans (net weight 425g) 12 pieces in a cardboard box
- Polypropylene bag with a polyethylene liner (net weight 20-30 kg)

Storage Conditions

- Store in a dry place below +4°C
- Do not expose to direct light
- The packing should be kept carefully closed and used immediately once opened
- Shelf life: 10 years

Hatching Instructions



Maintain water temperature at 28°C. Do not exceed 30°C. Temperature above 30°C may reduce the hatching rate.



Use filtered seawater.
Salinity: 20-40 ppt
pH: 7.5-8.5



Provide continuous lighting between 2500-6000 lux at water surface.



Incubate 2 grams of cysts per liter of water. Apply sufficient aeration from the bottom of the tank.